



Look for it on Blu-ray™, DVD & Digital HD

# TOOTHLESS PAPER TOY

## ASSEMBLY INSTRUCTIONS



Hey kids, make sure to ask an adult for help!



### GETTING STARTED

- Materials:
- Metal-edged ruler
  - Butter knife
  - Scissors or craft knife
  - Cutting mat (optional)
  - Multipurpose glue

**1** Score all the pieces, using a ruler as a guide and running the backside of a butter knife firmly along all dotted lines.



**2** Using scissors or a craft knife and cutting mat, cut out all pieces along solid lines.



**3** Fold all pieces along score lines, using the folding key below as a reference.

Mountain Fold

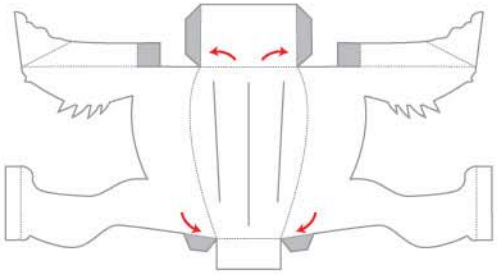


Valley Fold

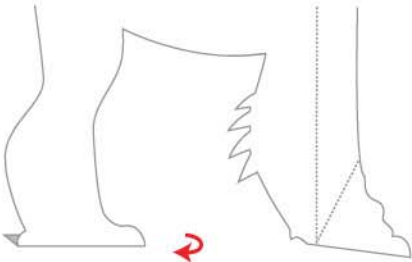


## ASSEMBLE TOOTHLESS

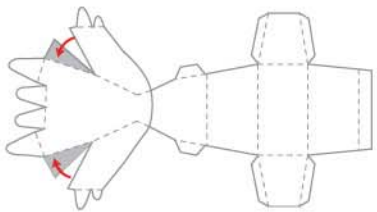
**4** Body: Fold sides of body inward and glue to A tabs. Glue B tabs under the front body.



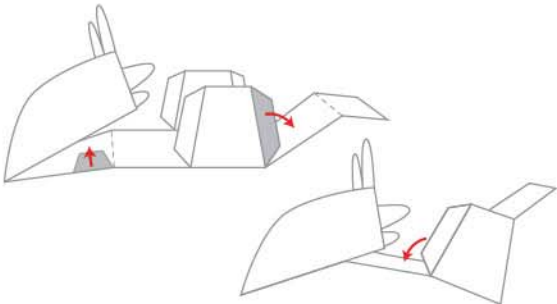
**5** Body: Fold C tabs under.



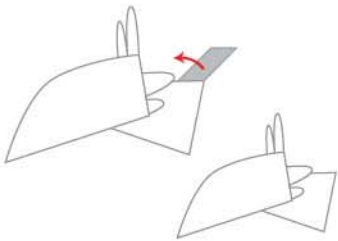
**6** Head: Fold sides of head inward and glue to A tabs.



**7** Head: Glue B tabs under sides of head. Then glue C tabs to back panel, and D tabs to bottom of the head.

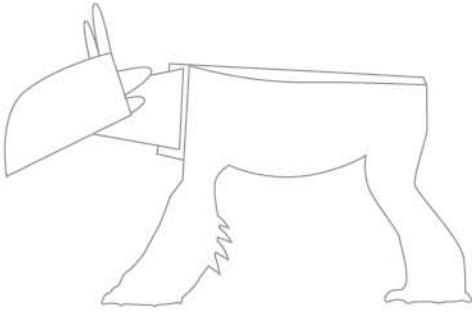


**8** Head: Fold E tab back, and secure under top of head.

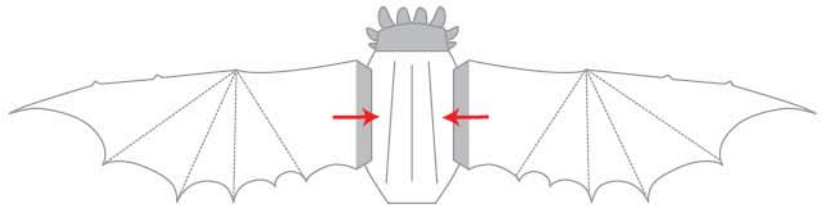


# ASSEMBLY INSTRUCTIONS CONTINUED

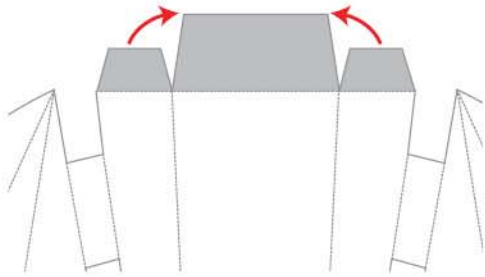
**9** Head: Glue head to front of body.



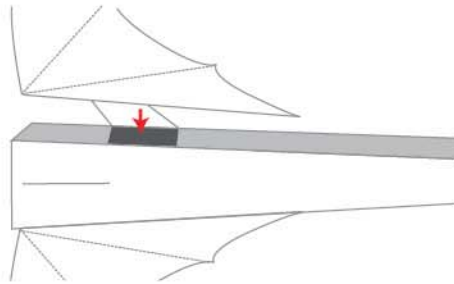
**10** Wings: Insert tabs and glue toward the center on the underside of body.



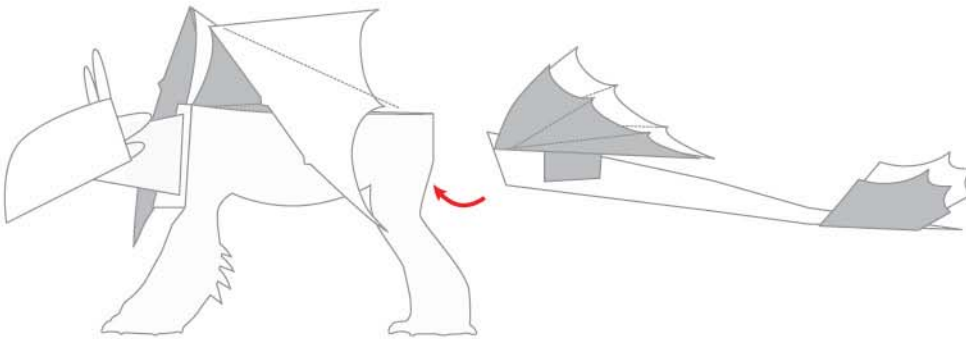
**11** Tail: Fold A tabs inward and glue under tab B.



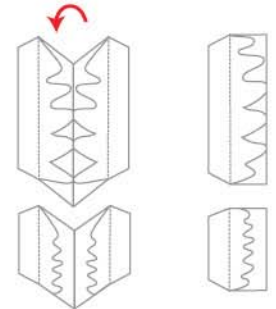
**12** Tail: Fold C tabs upward and glue to the tail.



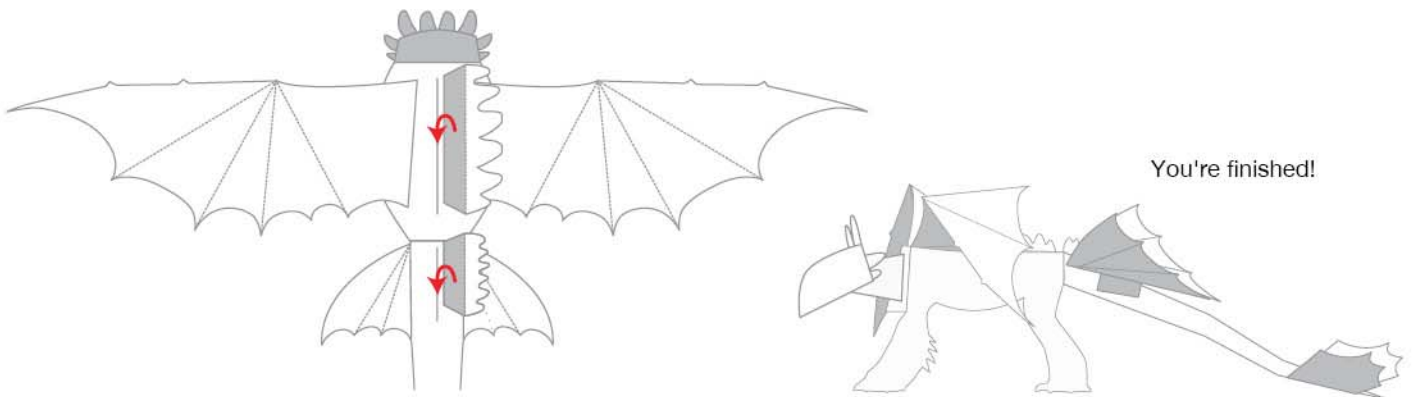
**14** Tail: Glue end of tail to the back of body.



**15** Fin: Cut around fin pieces, fold in middle, then cut around spike line.



**16** Fin: Slip fin tabs through slits on back and tail, and glue underneath to secure.

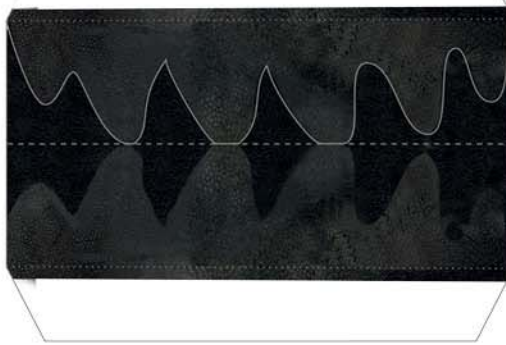




LEFT WING



LARGE FIN



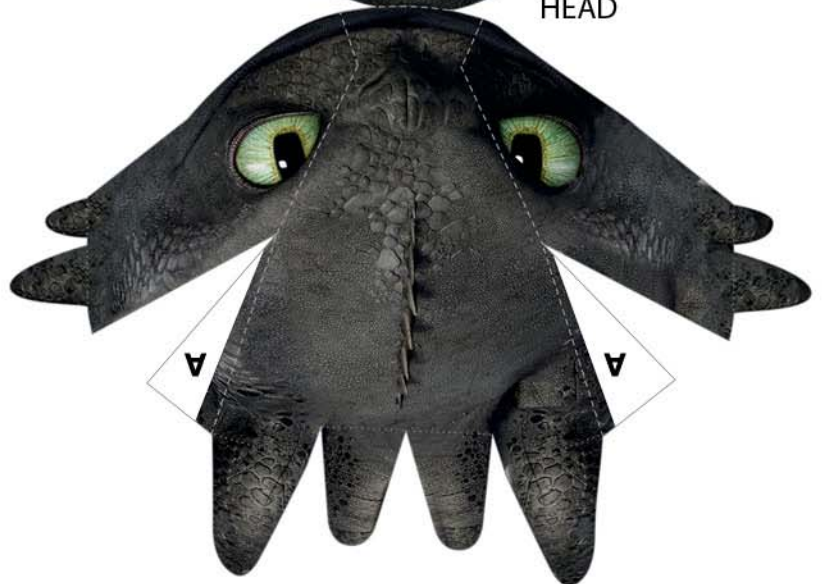
SMALL FIN



RIGHT WING



HEAD



BODY

